

# TRANSFLUID



# TRANSFLUID

## trasmissioni industriali

### QUALITY AS A STANDARD

Established since 1957, Transfluid is today a market leader in the field of industrial power transmissions and associated components.

Apart from often being required to find specific solutions to customers' individual problems, we also have a complete range of standard products; many of these our own, others coming from leading worldwide manufacturers, marketed by Transfluid.

Among these companies are Esco, Falk, Filton, Nexen, Reich, etc.

The Transfluid product range includes:

- fluid and flex couplings;
- variable speed drives;
- clutches and brakes;
- elastic couplings;
- power shift transmissions;
- power Take-Offs for marine and industrial engines;
- torque control products.

Quality is the main feature of the Transfluid product range and is achieved by:

- professional expertise supported by advanced technology;
- precise monitoring and checking at each production stage;
- final assembly checking and product testing prior to despatch to the customer.

Transfluid involvement extends from first customer contact, to design and production, and through full field support.

**drive with us**

POWER TRANSMISSION EQUIPMENT

**FLUID COUPLING  
K SERIES**

Constant fill  
up to 2300 kW



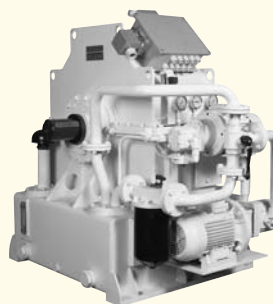
**FLUID COUPLING  
KX SERIES**

Oil or water constant fill  
low drag torque  
Up to 1000 kW



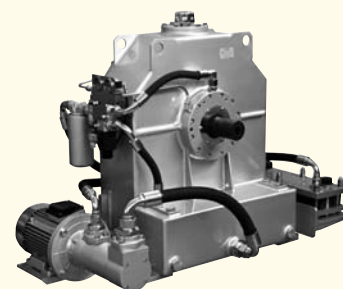
**FLUID COUPLING  
KSL SERIES**

Start up and variable  
speed drive up to 3500 kW



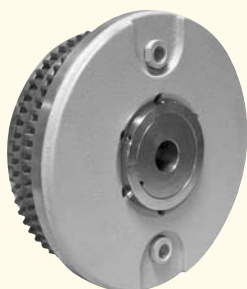
**FLUID COUPLING  
KPT SERIES**

Start up and variable  
speed drive up to 1700 kW



**PNEUMATIC CLUTCH  
TPO SERIES**

Up to 11500 Nm



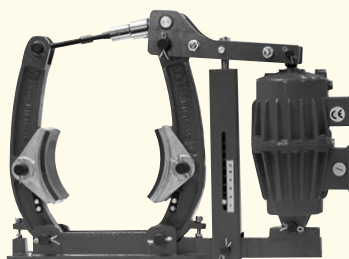
**HYDRAULIC CLUTCH  
HYDRAULIC BRAKE  
SHC-SL SERIES**

Up to 2500 Nm  
Up to 9000 Nm



**DISC AND DRUM BRAKE**

Up to 19000 Nm



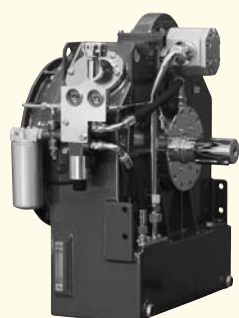
**OIL OPERATED POWER  
TAKE OFF  
HF SERIES**

Up to 800 kW



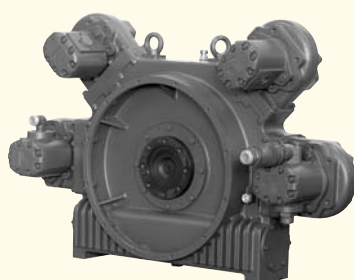
**FLUID COUPLING  
KPTO SERIES**

For internal combustion engine  
P.T.O. for pulley and cardan shaft  
up to 1700 kW



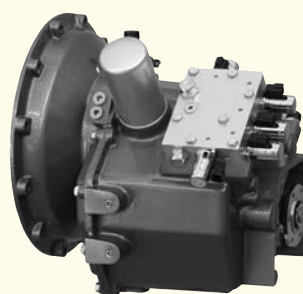
**MULTI PUMP DRIVE  
MPD SERIES**

Up to 1100 kW



**POWER SHIFT  
TRANSMISSION**

With torque converter  
one or more speeds  
manual or electric selector  
up to 95 kW



**ELASTIC COUPLING  
RBD SERIES**

For internal combustion engine  
up to 16000 Nm

