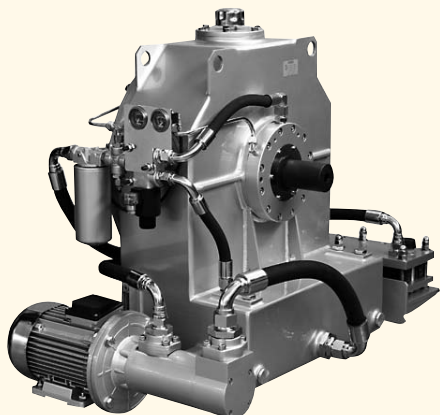


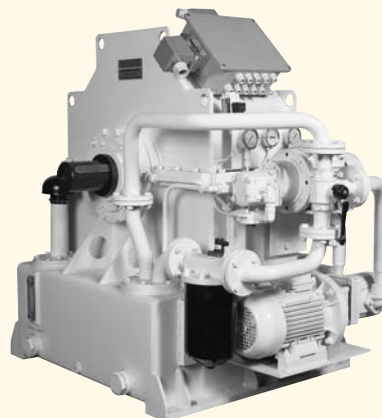
KPTB
Variable fill fluid coupling



Features	From	To
Size	15	29
Power (kW-hp)	65 - 90	1700 - 2280
Max. speed (rpm)	3600	

- Start up and variable speed drive
- For in – line and pulley applications
- Allows motor start up at no load, smooth starting even under nominal motor current
- Accurate variable speed performance with remote control
- Explosion proof version available
- EKPT special version for long wall conveyor drive
- Special design for Diesel applications available
- Inexpensive and easy maintenance due to external mounting of main accessories

KSL
Variable fill fluid coupling



Features	From	To
Size	21	D46
Power (kW-hp)	150 - 200	4000 - 5360
Max. speed (rpm)	3600	

- High efficiency and reliability
- Extremely accurate speed variation performance with remote control
- Allows motor start up at no load, smooth starting even under nominal motor current
- Explosion proof version available
- Inexpensive and easy maintenance due to external mounting of main accessories
- Split casing design for easy removal without altering alignment
- Available as start up drive or special Diesel applications

TRANSFLUID

Electric motor applications

drive with us

TRANSFLUID s.r.l.
Via Guido Rossa, 4
21013 Gallarate (VA) Italy
Tel. +39-0331.28421
Fax +39-0331.2842911
e-mail: info@transfluid.it
www.transfluid.eu

K SERIES Constant filling fluid coupling for in - line applications



KX SERIES
Constant filling fluid coupling



KS SERIES Constant filling fluid coupling for pulley applications



Features	From	To
Size	6	D46
Power (kW - hp)	1 -1.34	3500-4700
Max. speed (rpm)	3600	

- Available with standard and double delay fill chamber
- Compact design
- High temperature seals
- KDM and KCG version for easy coupling removal without altering alignment
- Wide choice of accessories
- Special design for underground mine applications
- ATEX design available
- Water version available (from size 13 up)

Features	From	To
Size	15	29
Power (kW - hp)	75 -100	1000 -1340
Max. speed (rpm)	1800	

- Working either with oil or water
- Compact design
Low starting torque design
- High temperature seals
- KXD and KXG version for easy coupling removal without altering alignment
- Special design for underground mine applications
- ATEX design available

Features	From	To
Size	6	27
Power (kW - hp)	1 - 1.34	700 - 940
Max. speed (rpm)	3600	

- Available with standard and double delay fill chamber
- Compact design and high radial load capacity
- High temperature seals
- Wide choice of accessories
- ATEX design available