

## PCB CONTROLLER FOR VARIABLE FILL FLUID COUPLING

Transfluid KPTO's have been widely used, for 10 years, in a variety of applications.

Although the KPTO works as a simple power take off for internal combustion engines, due to its peculiarities, it might be easily imagined as the "heart" for the control of the whole productive process. The key of success would be the knowledge of the real transmitted power. Nevertheless power must be controlled and tamed.

KPTO is a fluid coupling, hence the slippage between input and output speed is the easiest way to calculate the precise transmitted power. Therefore, Transfluid developed and successfully tested a new generation of PCB controller for making KPTO an intelligent transmission.

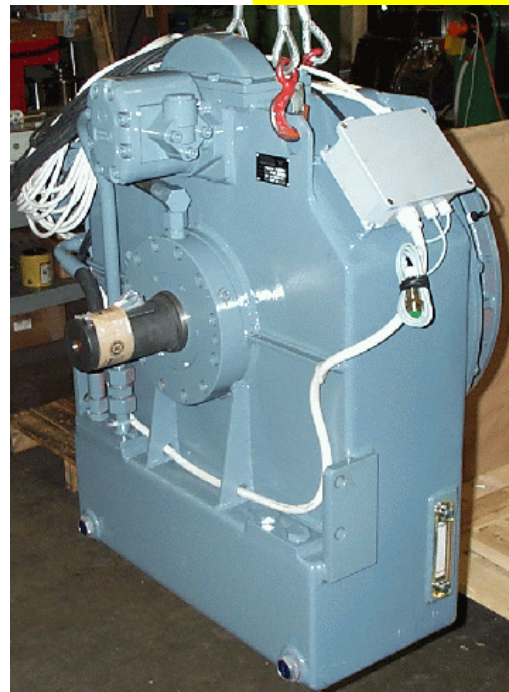
The PCB emits analog signals of transmitted power (kW) and output speed, digital alarm signals of max slip, slip threshold, max temperature, max and min oil pressure and solenoid valve ON/OFF status.

The PCB receives an external solenoid valve activation signal and the slip threshold can be set by the use of a potentiometer.

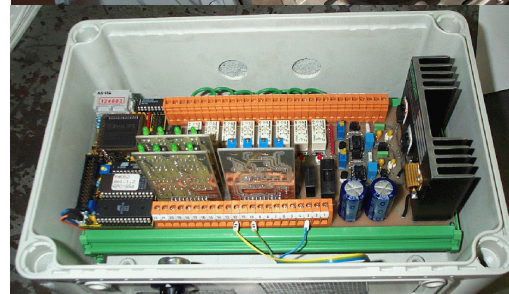
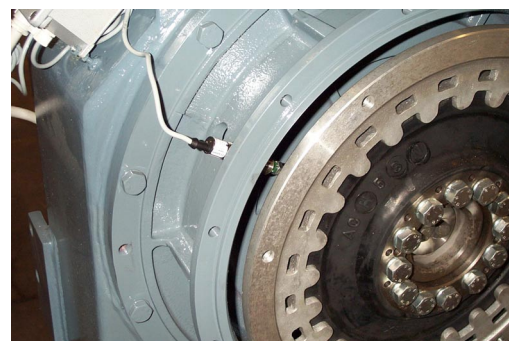
PCB is also equipped by RS-232 serial port for connecting with the interface program. This program can be used for both monitoring data in real time and for programming. PCB output can be used for controlling of process and production optimization.

Any user may profit from few or all of the information depending on the application; however the PCB appears very useful for the following purposes: safety, energy saving, increase of productivity and process data knowledge.

Upgrade and improve your technology through the use of a Transfluid KPTO and PCB controller, in marine and industrial applications.



19 KPTO ready for shipment



Input proximity detail and PCB view

**drive with us**

Via Vincenzo Monti, 19  
20016 Pero (Milano) ITALY  
Tel. +39 02 339315.1 Fax +39 02 33910699  
e-mail: [info@transfluid.it](mailto:info@transfluid.it)  
Internet: [www.transfluid.it](http://www.transfluid.it)

**02**  
**2001**

pag 1/1